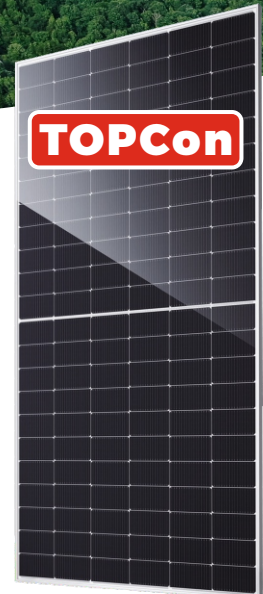


LUXPOWER® SERIES **N5**



605-625W Mono
132 Half-Cell Layout
G12R N-TOPCon Cell



N LECO N-TOPCon Cell Technology

 Half Cut Cell Technology

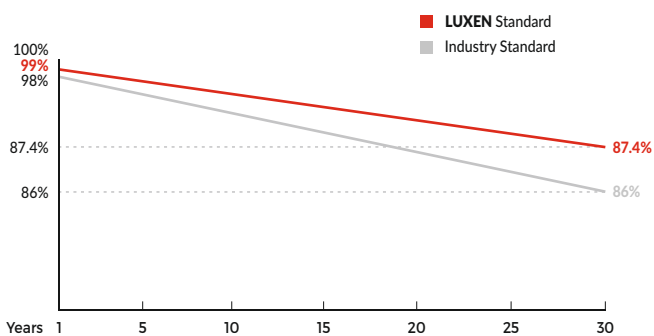
 SMBB Technology

anti PID LID Excellent Anti-PID Low LID Performance

A Less Hot Spot Shading Effects

 Higher Power Output Lower BOS & LCOE

Linear Performance Warranty



* LUXEN TOPCon: Standard warranty 15 years, can be extended up to 20 years.

Insured By



Comprehensive Certificates

- ISO9001:2015 QMS
- ISO14001:2015 EMS
- ISO45001:2018 OHSMS
- IEC61215/IEC61730 Standard Quality
- IEC61701/IEC62716 Salt/Mist/Ammonia Tests



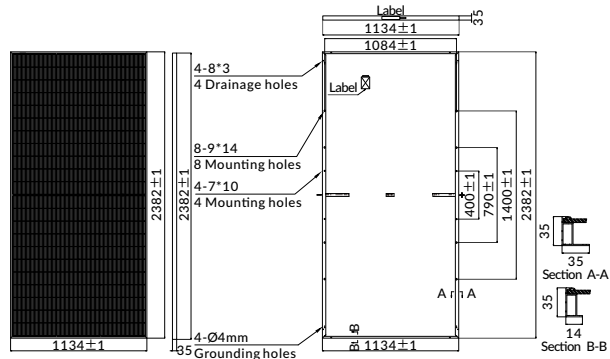
LUXEN SOLAR ENERGY CO., LTD.

Operational HQ: Vienna Technology Center, Christine-Touaillon-Strasse 11/2.01, 1220 Vienna, Austria
Production HQ: No.1, Haiyue Road, Nantong, Jiangsu, 226000, China
europe@luxensolar.at

www.luxensolar.com

MECHANICAL CHARACTERISTICS

Solar Cells	N-type Mono
No. of Cells	132 (6x22)
Dimensions	2382 x 1134 x 35mm
Weight	29.0kg
Front Glass	3.2mm coated tempered glass
Frame	Anodized aluminium alloy
Junction Box	Ip68 rated (3 by pass diodes)
	4.0mm ²
Output Cables	280mm (+) / 350mm (-)
	Length can be customized
Connectors	Mc4 compatible
Mechanical load test	5400Pa



ELECTRICAL PARAMETERS

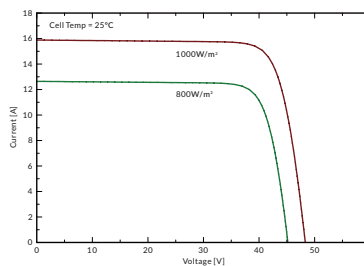
POWER CLASS	LNDT-605N		LNDT-610N		LNDT-615N		LNDT-620N		LNDT-625N	
	STC	NMOT	STC	NMOT	STC	NMOT	STC	NMOT	STC	NMOT
Maximum power (Pmax)	605W	454W	610W	458W	615W	462W	620W	466W	625W	470W
Open Circuit Voltage (Voc)	47.85V	44.88V	48.04V	45.09V	48.24V	45.30V	48.43V	45.50V	48.63V	45.71V
Short Circuit Current (Isc)	15.78A	12.62A	15.84A	12.67A	15.90A	12.72A	15.96A	12.77A	16.02A	12.82A
Voltage at Maximum power (Vmpp)	40.71V	38.19V	40.88V	38.37V	41.05V	38.55V	41.22V	38.73V	41.39V	38.91V
Current Maximum Power (Impp)	14.86A	11.89A	14.92A	11.94A	14.98A	11.98A	15.04A	12.03A	15.10A	12.08A
MODULE EFFICIENCY (%)	22.40%		22.58%		22.77%		22.95%		23.14%	

STC: Irradiance 1000W/m², cell temperature 25°C, AM1.5G NMOT: Irradiance 800W/m², ambient temperature 20°C, wind speed 1m/s, AM1.5G

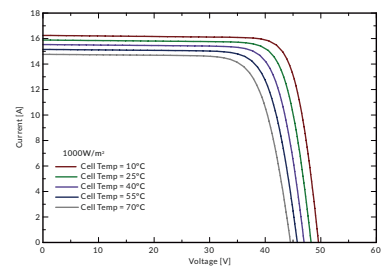
PACKING CONFIGURATION

Container	40'HQ
Pieces per pallet	31
Pallets per container	16
Pieces per container	496

I-V CURVE



LNDT-615N/I-V



OPERATING CHARACTERISTICS

Operating Module Temperature	-40°C to +85°C
Maximum System Voltage	1500 DC (IEC)
Maximum Series Fuse Rating	30A
Power Tolerance	0/+5W

TEMPERATURE CHARACTERISTICS

Nominal Operating Temperature (NMOT)	45±2°C
Temperature Coefficient of Pmax	-0.29%/°C
Temperature Coefficient of Voc	-0.25%/°C
Temperature Coefficient of Isc	+0.045%/°C

Note: The specifications, data and technical characteristics provided in this data sheet are subject to changes due to continuous R&D, product innovation and improvement. LUXEN SOLAR reserves the right to modify the information any time without prior notice.